

Using EMU proxy server

helpdesk@emu.ee

Since Google Chrome browser is the only browser to be able to communicate with a secure proxy server, you need to install Chrome browser on your computer.

<https://www.google.com/chrome/>

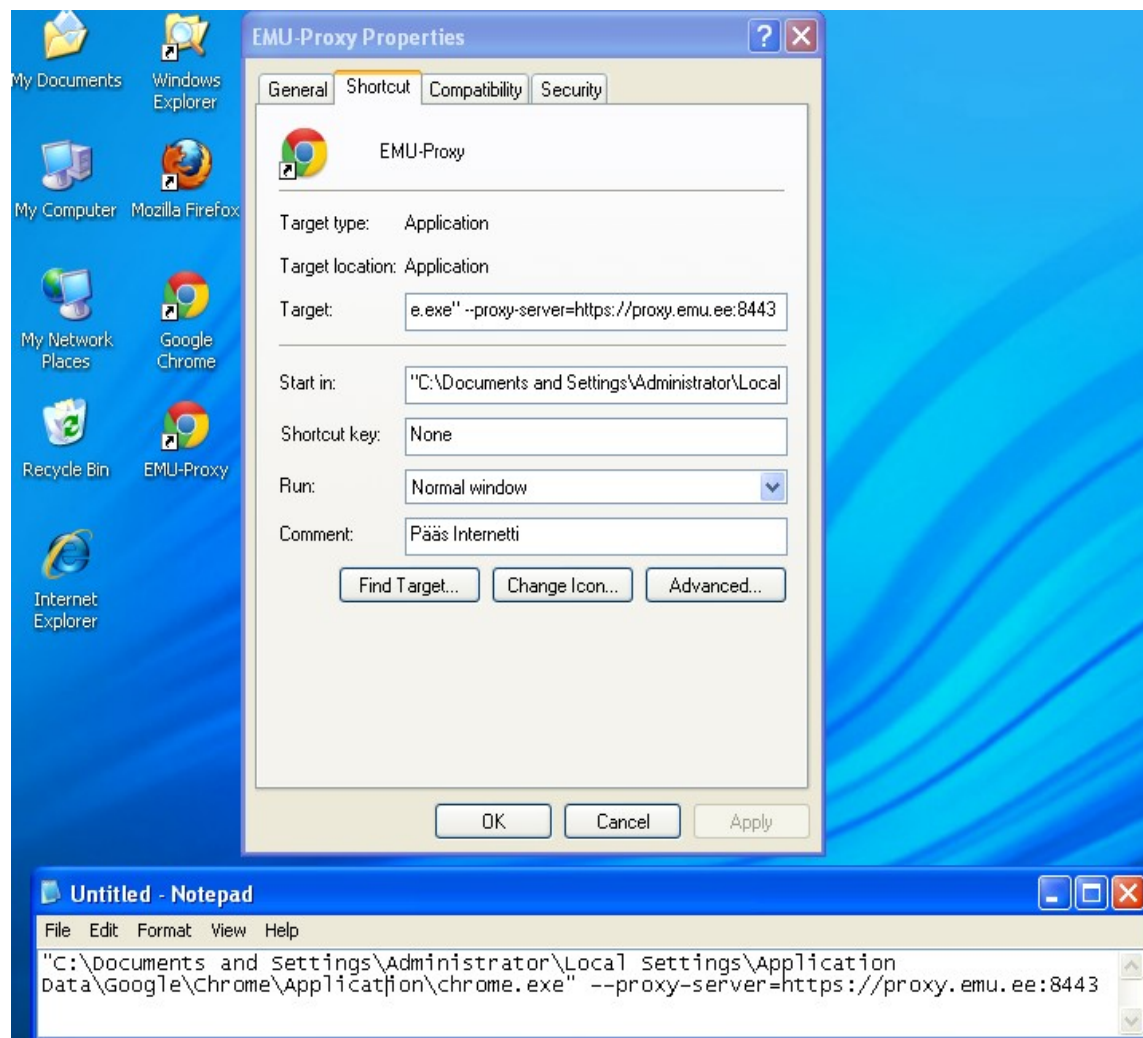
1. If Chrome is installed, make a copy of the Chrome shortcut from your desktop and rename it for example as „EMU-Proxy“.



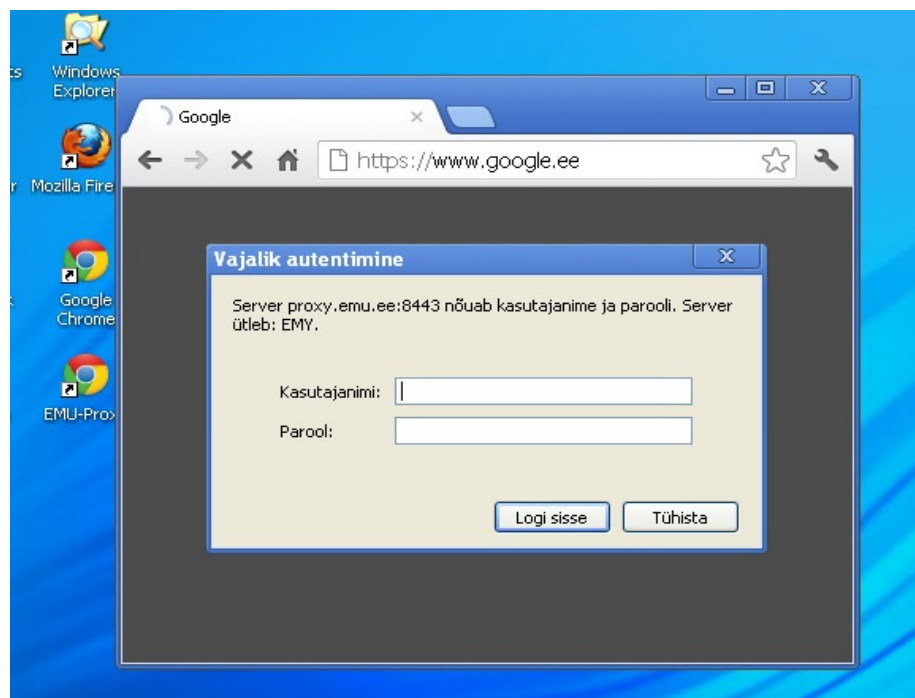
2. Make right click on icon and choose „Properties“



3. Add to the end of „Target“ line (outside quote):
--proxy-server=https://proxy.emu.ee:8443
Make sure to leave a space between quotes and addition.
You can also see whole line on following screenshot.

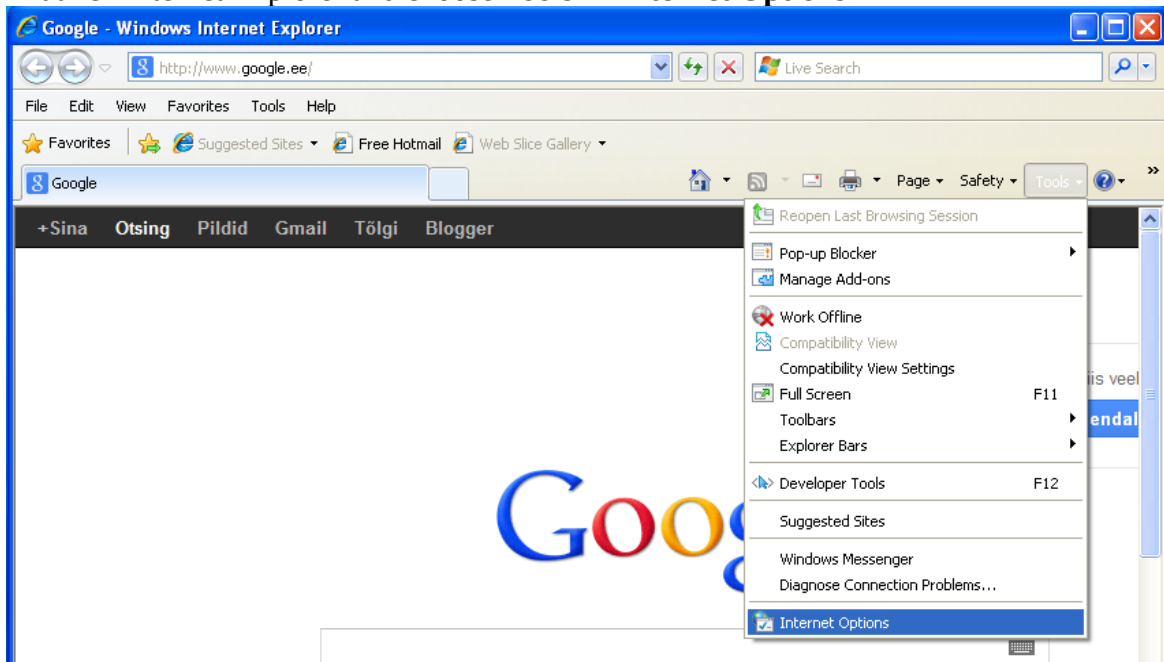


4. Click „Apply“, „OK“ and that's it.. Launching EMU-Proxy you will be used username and password. Those are EMU central credentials (Windows domain username and password). NB! If authentication window doesn't appear, then close ALL Chrome browser windows and Relaunch EMU-Proxy.

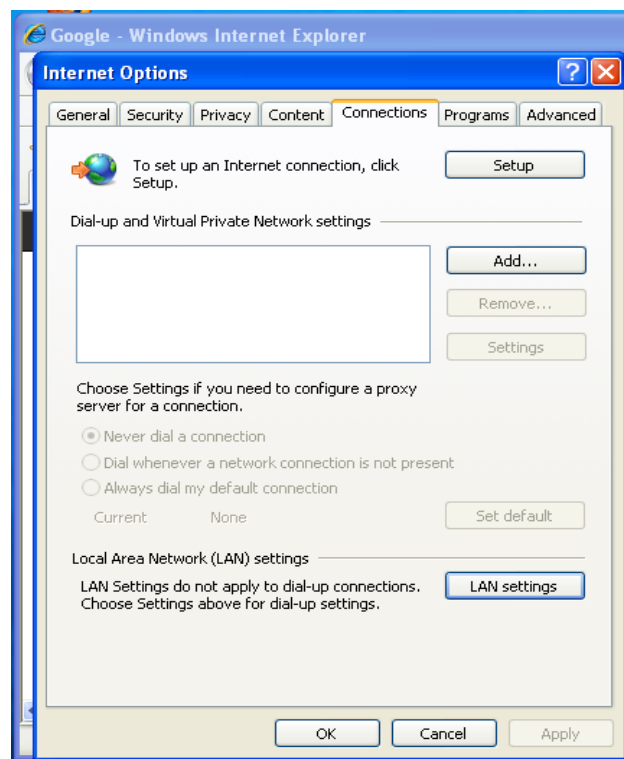


Following is needed only for them, who already configured Chrome to use „emyproxy.pac“.

1. Launch Internet Explorer and choose **Tools -> Internet Options**



2. **Connections -> LAN Settings.**



3. Empty „Address“ line and remove tick from „Use automatic configuration script“.

